



# Belvac Production Machinery Technical Bulletin

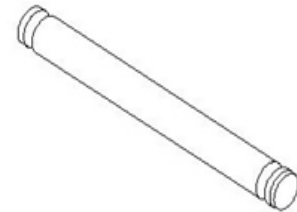
Information for Customers Operating & Maintaining Belvac Machines

ISSUE 5, VOLUME 16, JULY 2013

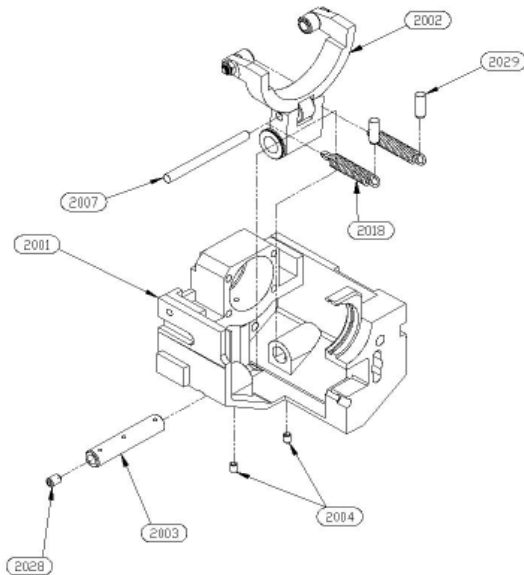
## CC SERIES TRIMMER: EMC CARTRIDGE SPRING DOWEL PIN UPDATE

As of August 2011, Belvac updated the crossbar #2007 used on the EMC Rocker Arm. This update affects the EMC Cartridge Spring Installation (Tech Bulletin Issue 5, Volume 12, April 2009) and should be implemented for all EMC Cartridges. The design update described in this Technical Bulletin will improve the life of the spring #2018 found within the Rocker Arm assembly.

The original design for crossbar #2007 called out part number 9310106 - Pin, Dowel Modified. The grooves at the end allow for fastening of spring #2018 to the obsolete crossbar #2007 in a specific area.



*Obsolete Crossbar #2007 - Dowel Pin with Grooves*



*EMC Cartridge Spring Installation with Updated Crossbar #2007*

The updated crossbar #2007 calls for an unmodified pin - H100059. Spring #2018 will fasten around the uncut edge of crossbar #2007. The updated crossbar design is 0.50" longer than its predecessor, and has no grooves. This design update will improve the life of spring #2018.

For any questions regarding this improvement, please contact Belvac's service department.